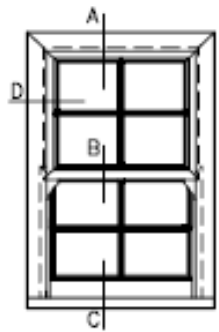
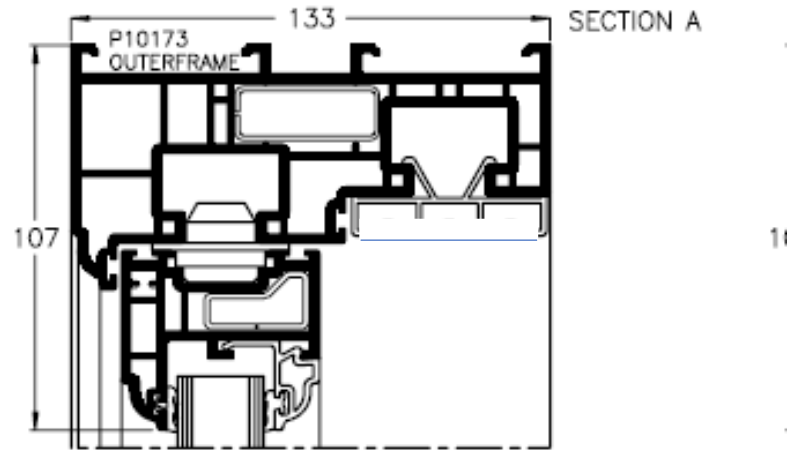


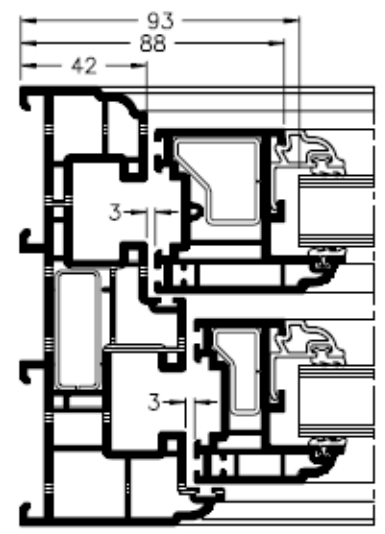
# KAT Elegance Box Sash Windows Vertical Section Drawing



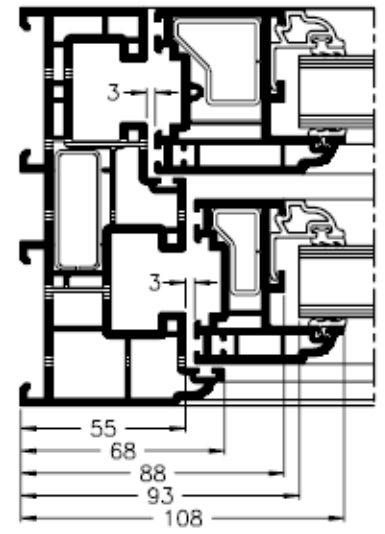
TO CALCULATE FINISHED SASH HEIGHTS,  
TOP & BOTTOM SASH HEIGHT =  
$$\frac{\text{OVERALL FRAME HEIGHT} - 97\text{mm}}{2} + 24\text{mm}$$

TO CALCULATE FINISHED SASH WIDTHS,  
TOP SASH WIDTH =  
OVERALL FRAME WIDTH - 116mm

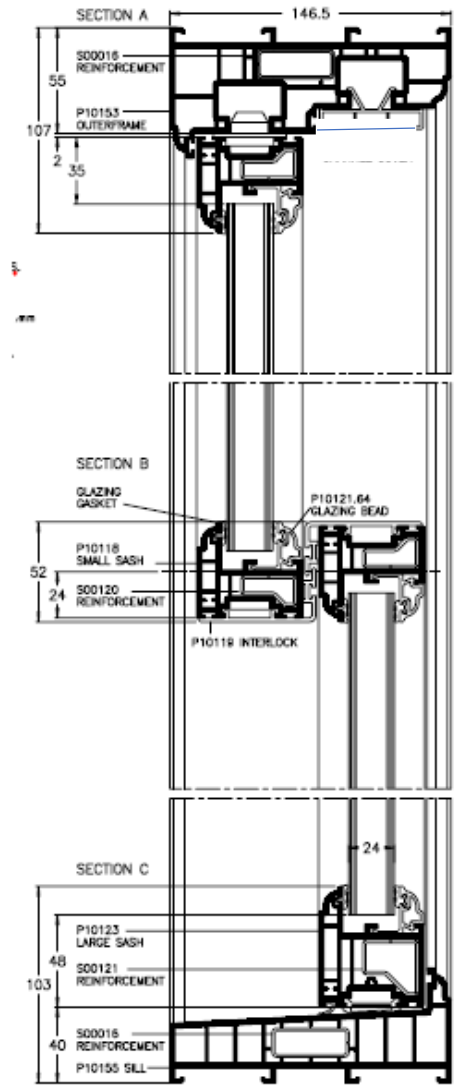
BOTTOM SASH WIDTH =  
OVERALL FRAME WIDTH - 90mm



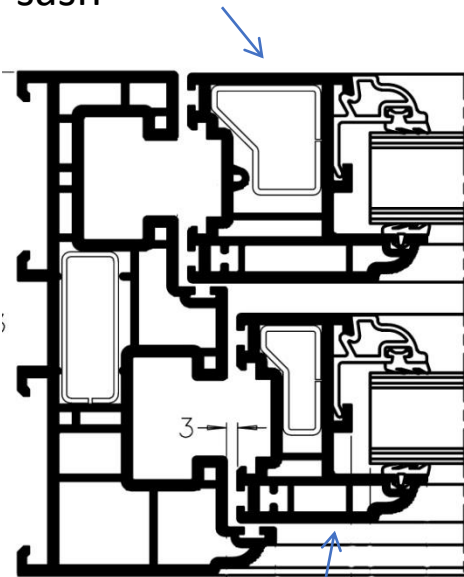
SECTION D  
P10153  
OUTERFRAME



SECTION D  
P10173  
OUTERFRAME



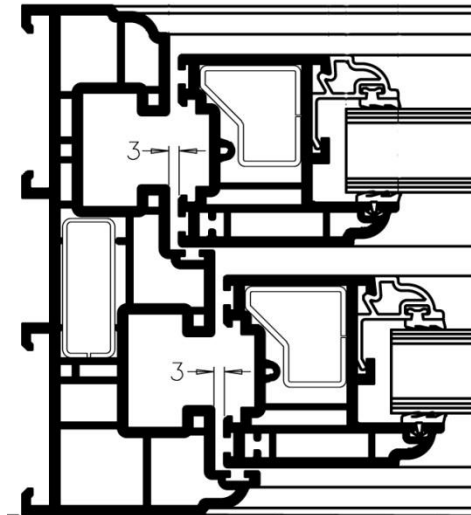
Large bottom sash



Small top sash

**Standard Configuration**

Large/Large



Sightlines do not line through

Deep bottom rail

