

# ANGELUS

## LOOKS LIKE ALUMINIUM, FEELS LIKE VELVET



**The Angelus window closely resembles an aluminium window, with a smooth velvet-touch finish.**

Angelus windows are hand-crafted, with a mechanically jointed sash and frame to closely replicate a traditional timber window.

What sets the Angelus window apart from other windows, is the fabulously smooth finish, available in a choice of Graphite, Anthracite or Platinum Grey. The windows are flush on the outside and feature a sculptured ovolo finish on the inside.

#### Features:

- Smooth, velvet-like finish
- Available in Graphite, Anthracite or Platinum Grey
- Excellent thermal performance – U-value of 1.4 W/m<sup>2</sup>K
- Suitable for conservation areas
- Lockable night vent facility
- SensCheck window sensor



*Angelus*

01625 439666

w: [katuk.co.uk](http://katuk.co.uk) | e: [enquiries@katuk.co.uk](mailto:enquiries@katuk.co.uk)



## Optional

For a French window with two opening sashes side-by-side, we can now manufacture a slimmer mullion which is invisible from the outside. When placing an order for an Angelus window, please let us know if you would prefer this option.

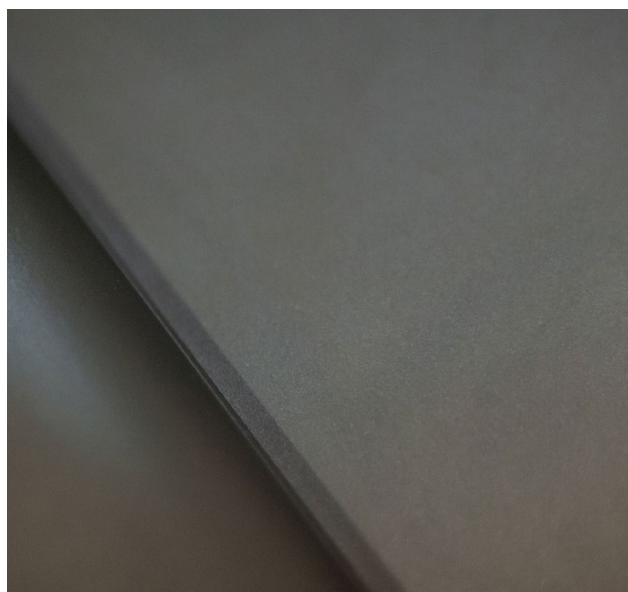
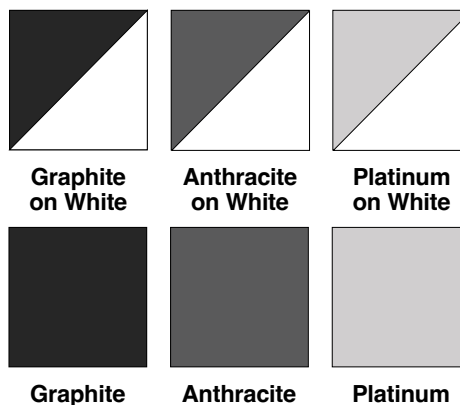
## Hardware & Accessories

Inline locking handles in Graphite, Black, Satin, Chrome, White or Gold.



## Colours

The Angelus Flush Window is available in a luxury velvet-like finish in Graphite Black, Anthracite Grey, Platinum Grey both inside and outside, or you can choose a Smooth White finish on the inside.



The colours shown are for illustrative purposes only.

## Security

Each window will feature a multi-point locking system, securing all four sides of the opening sash, for your safety and security.

We fit a fully concealed Yale SensCheck window sensor to all Angelus windows.

## Thermal Performance

Excellent thermal performance U-Value of 1.4 W/m<sup>2</sup>K

## SensCheck Window Sensors

SensCheck window sensors are fully concealed, ensuring there is no impact on the style, security, or functionality of the windows. To activate the sensors, simply contact Yale directly.



*Angelus*

01625 439666

w: [katuk.co.uk](http://katuk.co.uk) | e: [enquiries@katuk.co.uk](mailto:enquiries@katuk.co.uk)

